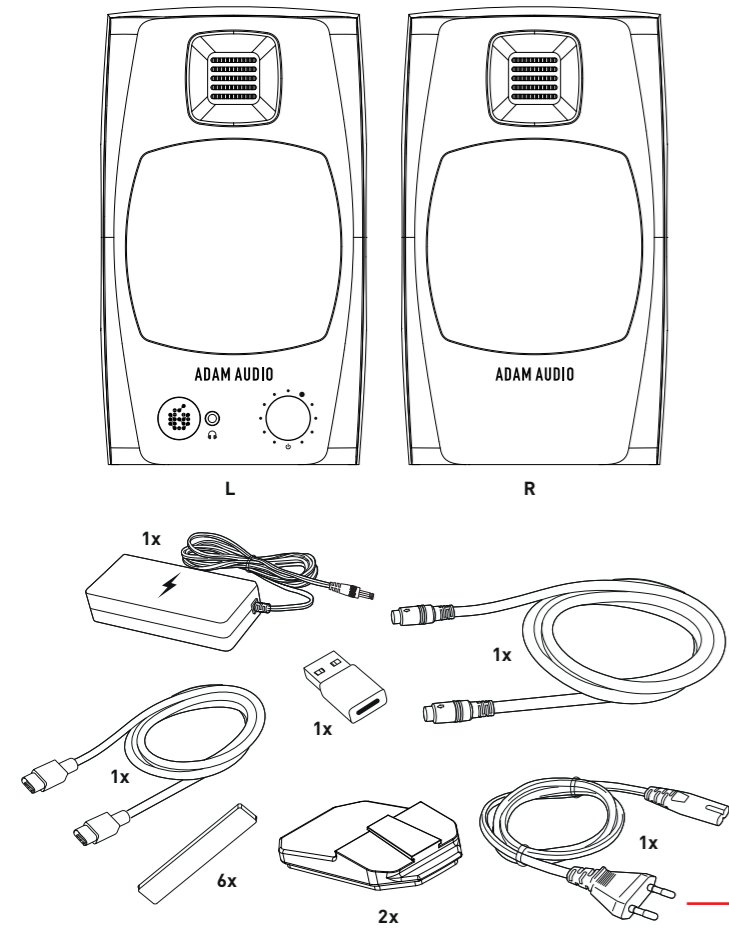
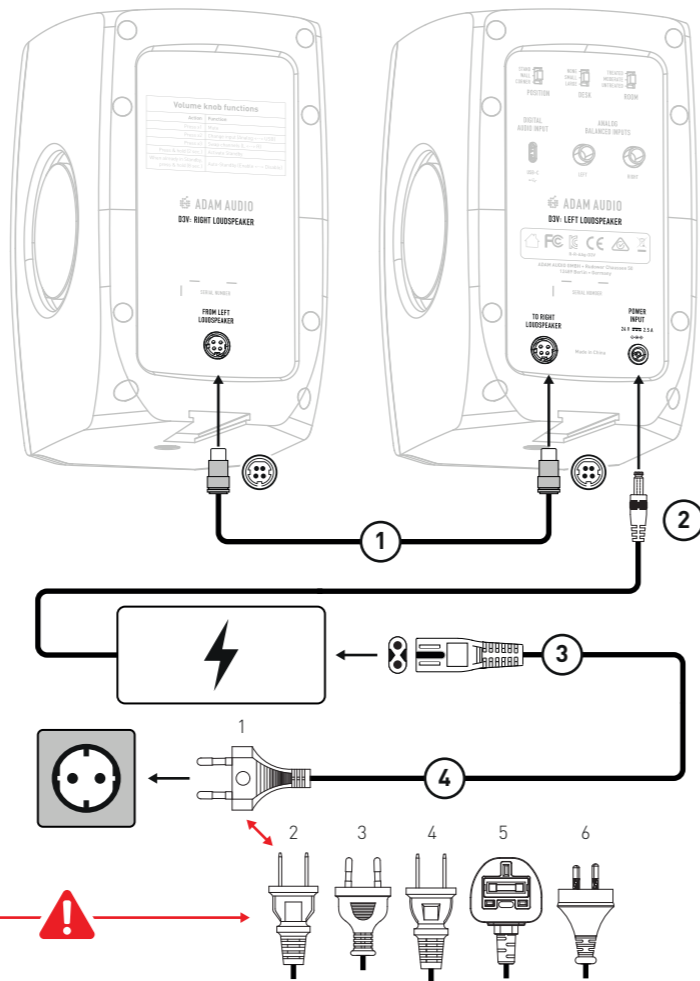


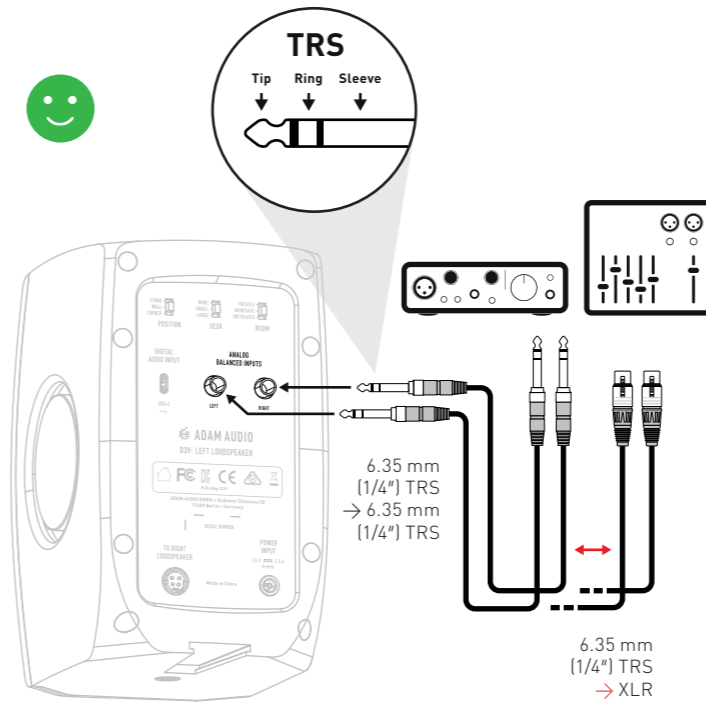
## 1) What's included



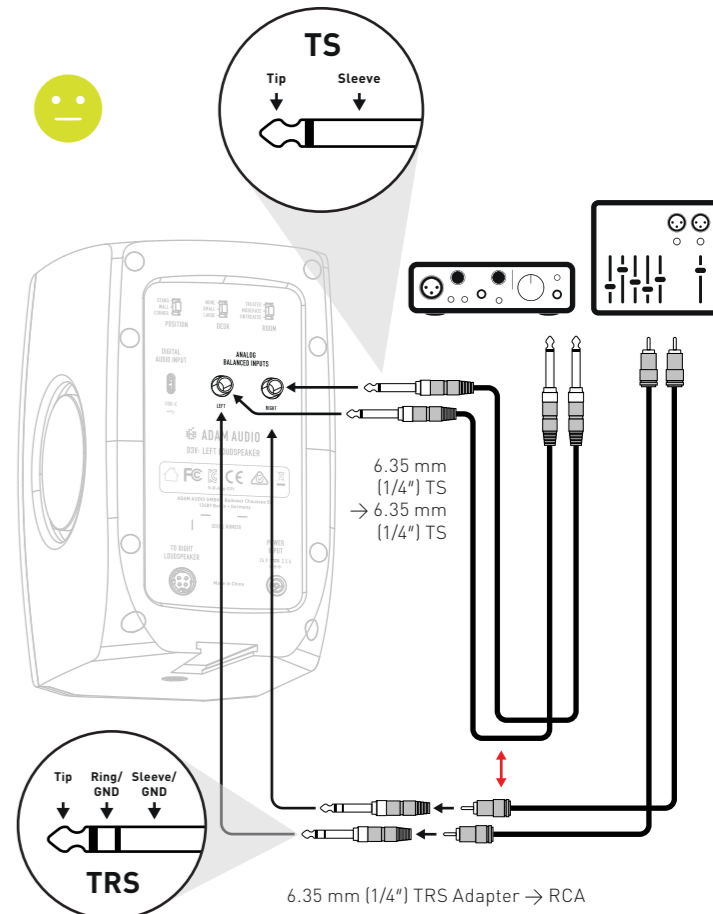
## 2) Power connection



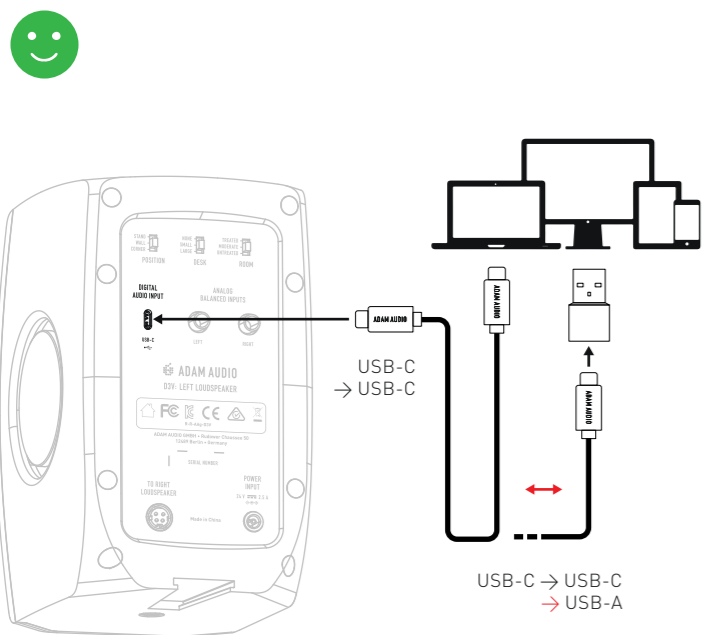
## 3) Balanced analog audio connection



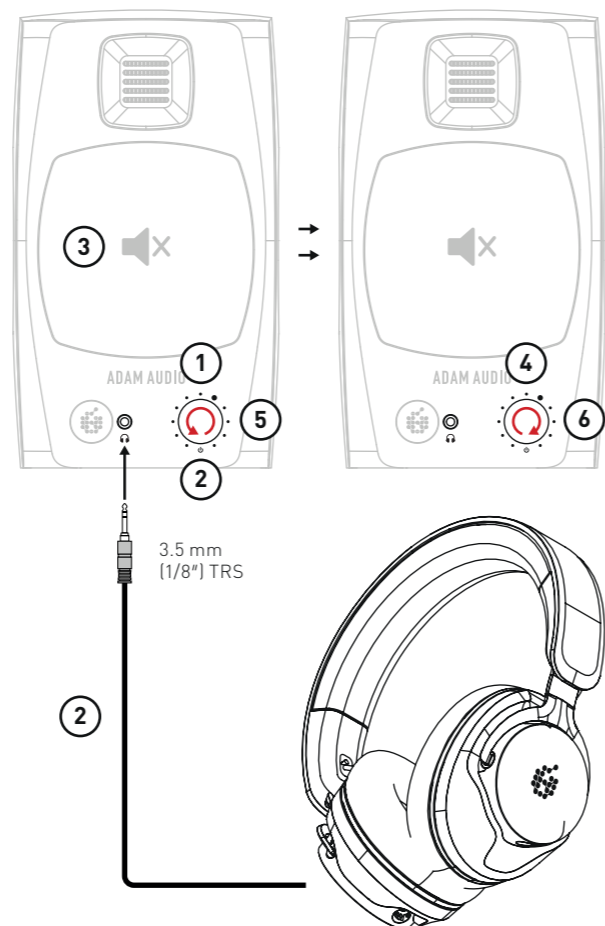
## 4) Unbalanced analog audio connections



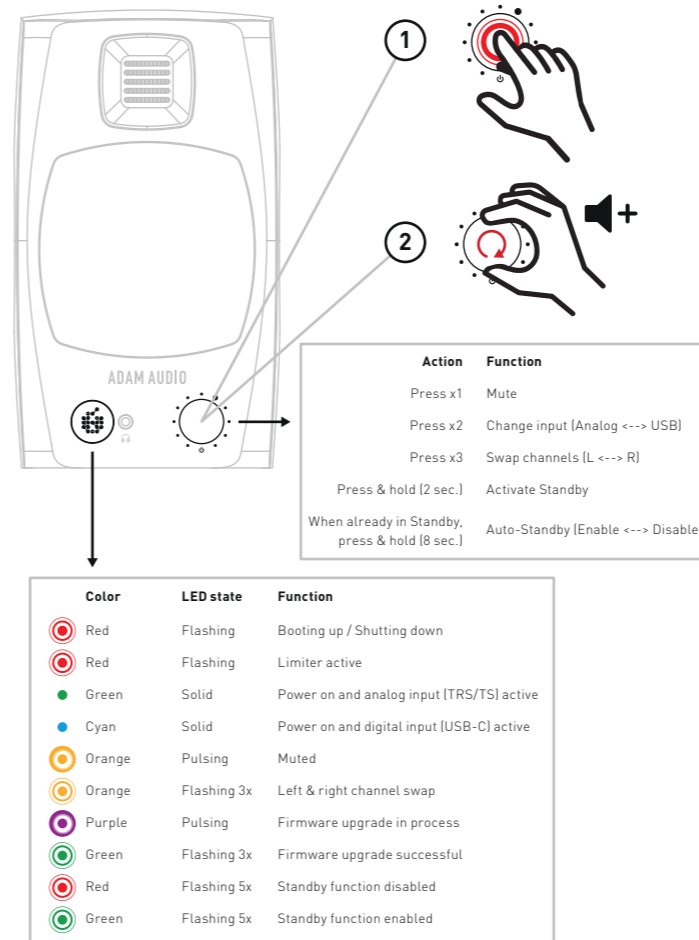
## 5) Balanced digital audio connection



## 6) Headphone connection

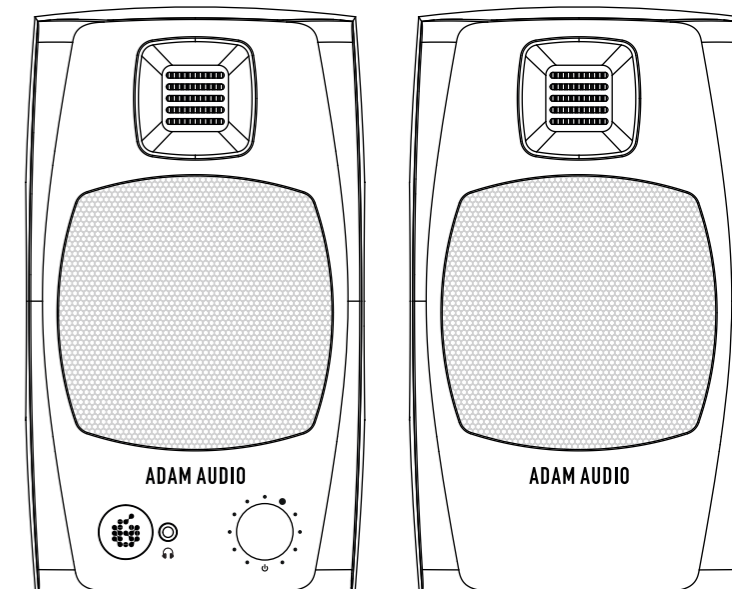


## 7) Use of rotary front knob & LED states



# D3V

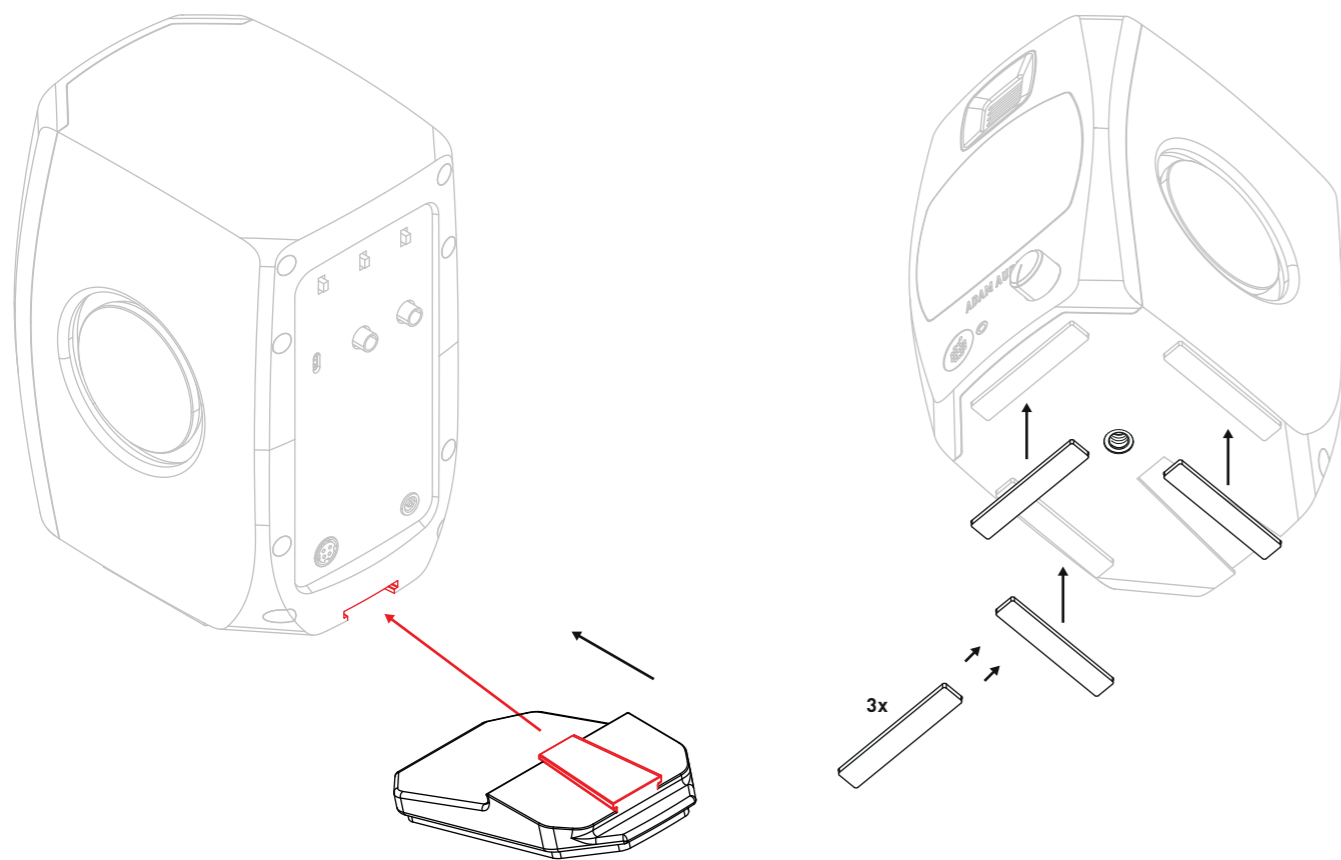
Desktop  
Monitor System



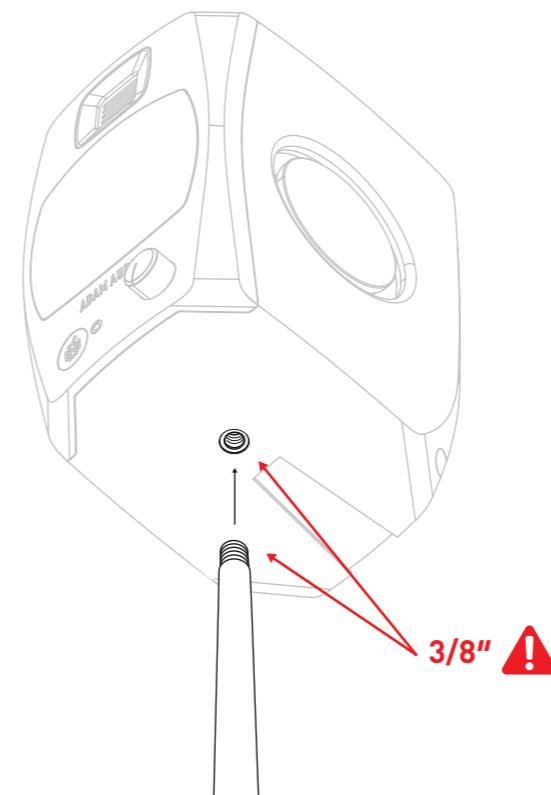
Quick Start Guide

**ADAM AUDIO**

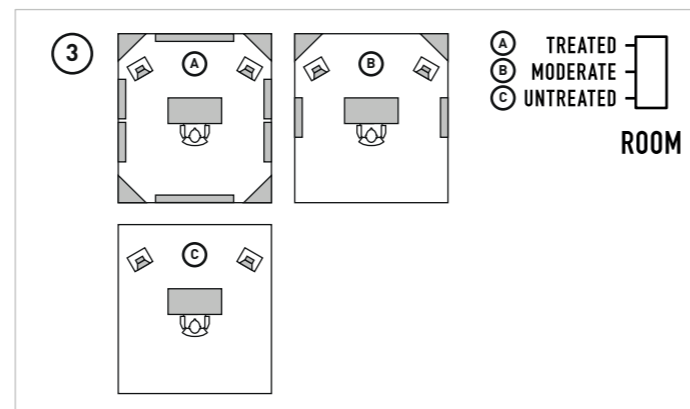
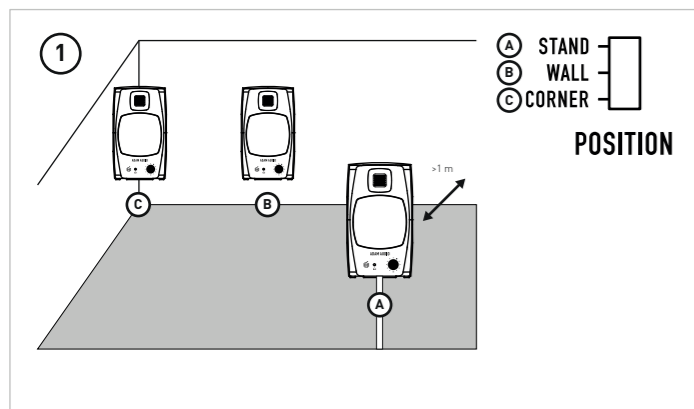
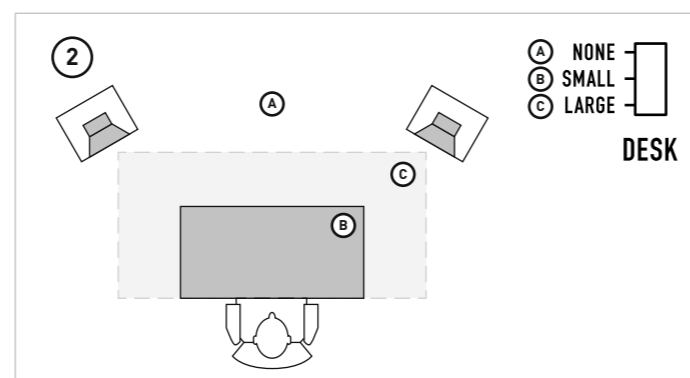
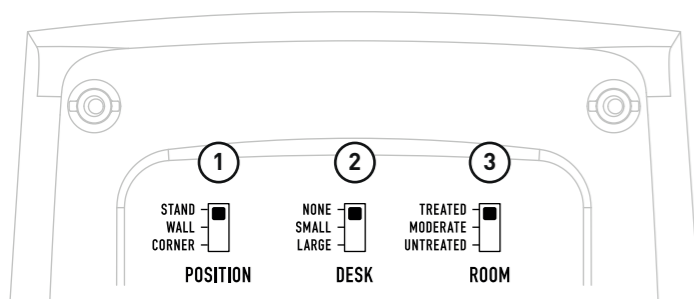
## 8) Desktop stand connection & stick-on pads



## 9) Microphone stand connection



## 10) EQ section



For the complete user manual, visit:  
 Pour le manuel d'utilisation complet, visitez:  
 Para consultar el manual de usuario completo, vaya a:  
 Para consultar o manual de usuário completo, visite:  
 Per consultare il manuale utente completo, visitate:  
 Ein vollständiges Benutzerhandbuch finden Sie auf:  
 詳しいマニュアルは、下記にて:  
 查看完整的用户手册, 请访问:  
 查看完整的用户手册, 请访问:  
 설명서 전부를 보시려면 다음 웹사이트를 방문하십시오 :

[www.adam-audio.com/d3v/manual](http://www.adam-audio.com/d3v/manual)

